

OUR FUTURE AVONDALE

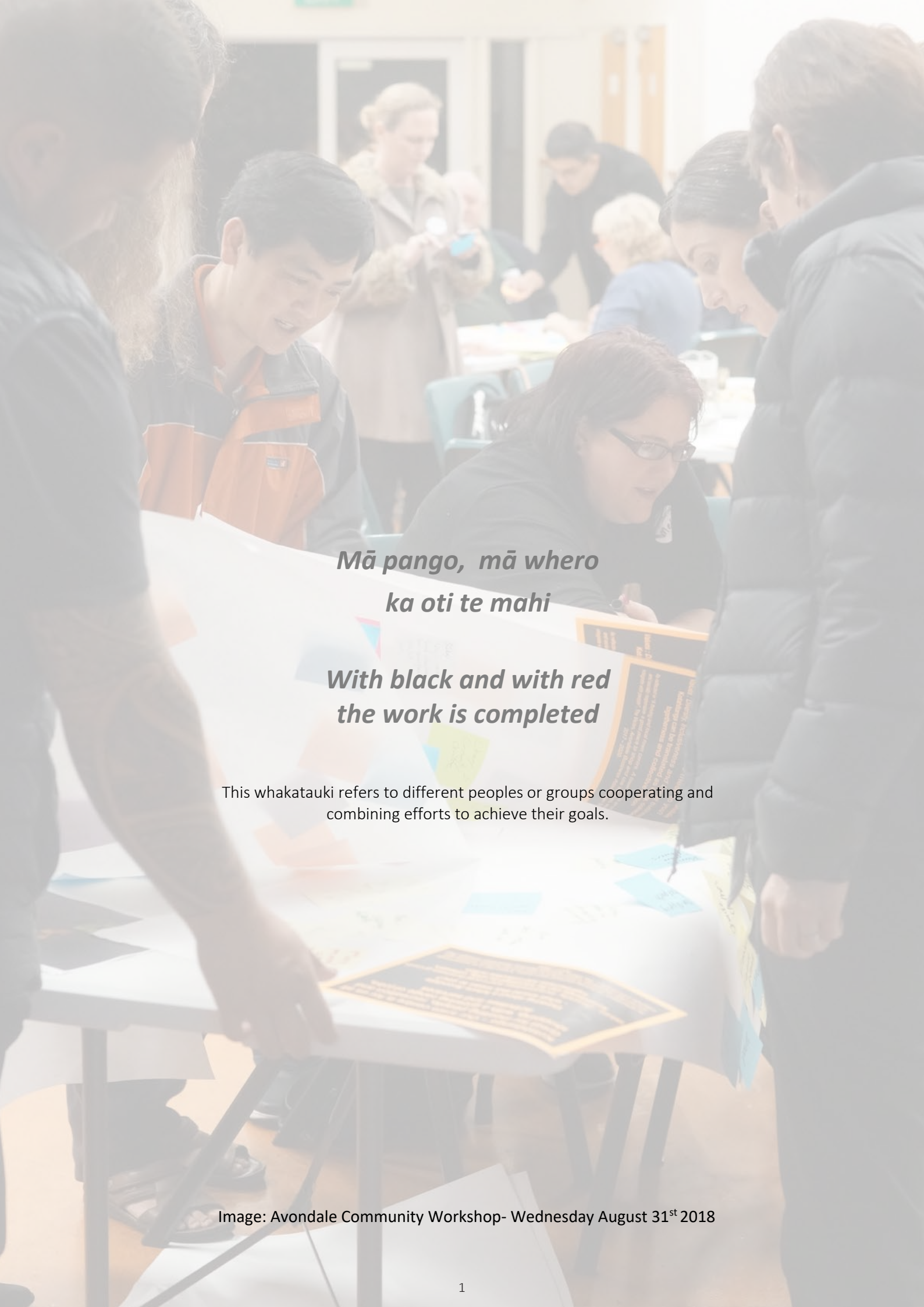


The Communities of
Avondale

Vision and
Design Principles

April 2019





***Mā pango, mā whero
ka oti te mahi***

***With black and with red
the work is completed***

This whakatauki refers to different peoples or groups cooperating and combining efforts to achieve their goals.

Contents Page

Introduction	3
How was the vision produced?	5
Workshop process	6
Avondale from the past	7
Avondale today	8
Avondale in the future?	9
Ideas for the future	10
Our Future Avondale Overview	11
- Ngā Ara Whau - Safety and Accessibility	13
- Hauora - Health and Wellbeing	15
- Kotahitanga – Inclusiveness and Local Business Growth	17
- Taiao – Natural Environment	19
- Mahi Toi – Creativity and Diversity	21
- Mana – Character and Heritage	23
Attachments	
A - Summary of Facebook Comments	27
B - Community Workshop Information and Draft Vision Themes	29
C - Context Maps	31
References	34

Introduction

Our Future Avondale vision is a living document, and the ideas and aspirations are not fixed, but provide a start for ongoing discussion and collaboration.

This document has been produced with members of the Avondale Community to help them form a community-led vision for the future of Avondale.

Avondale is a town-centre and suburb where significant change and development is anticipated over next 5 – 15 years. This will include many more apartments and terraced houses, a new community centre, and upgrade works in the town centre. Redevelopment of several large sites is anticipated, including land owned by Housing New Zealand and Panuku Development Auckland, Auckland Council's urban development agency. Auckland Council related projects will include future community consultation, specific to each project, when work is underway.

The purpose of this vision document is to provide the communities of Avondale with a clear voice on what is currently important to them for the future of Avondale; and to help designers and decision makers to better understand community aspirations when new development is being planned. It is not intended to be a technical planning document, and priority has been given to reflecting the community's voices, and shared values that can be applied in a variety of ways to both public and private development projects.

The vision also provides the opportunity for new community-led initiatives to be identified, and existing organisations to know that they have support and interest from the wider community.

The workshop process and research also highlighted the important relationship between the Rosebank Peninsula and Avondale both in the past and in the present day due to the geography, connecting routes, residential and business areas, schools, sports and recreational facilities and this should be reflected in future development, projects and planning.



In the community workshops (August 2018) participants were asked: *When you think of an ideal future Avondale, what are the one or two words that come to mind?* These are recorded in the ‘wordle’ and the most popular words are largest. The most common words were **diversity, green spaces, safety** and **affordable**.

How was the vision produced?

This draft vision document was facilitated by Motu Design, through analysing and summarising the comments and ideas provided by people who attended the Avondale community workshop events. Three community workshops were held in August/September 2018. Although participants at the workshops came from diverse backgrounds there was less representation from the youth, migrant and Chinese populations of our Avondale area although efforts were made to reach out to these groups. Project limitations meant no specific child focussed sessions were held.

The initial draft document was then reviewed against a summary and analysis of 459 comments shared by people made on the I Love Avondale and Avondale Community Action Facebook pages between July and September included as Attachment A. Additional comments received from a library display and via email, were also considered.

The draft vision document has been provided for further consultation with the Avondale community including at two public events before finalising. Key feedback resulting in additional changes to the final document included the use and interpretation of the term mana; the importance of trust to ensure a sense of belonging and social connectedness; the need to acknowledge the impact of the CLR link and Whau Low Carbon Plan along with the upcoming zero carbon legislation.

The project was enabled by the Whau Local Board, supported by the Community Empowerment team at Auckland Council and facilitated by Motu Design Ltd as an independent community project and not part of a statutory consultation process. Additional support to finalise, share and print the document was provided by Avondale Community Action. The project was also discussed and shared with Te Kawerau ā Maki and Ngāti Whātua o Ōrākei.

Community Working Group and Supporters

A community working group made up of a range of people who live and work in the Avondale community provided support for the workshops. This included providing advice on the workshop process, a review of the draft vision themes, and assistance with advertising, communications, workshop set up and hosting.



Workshop process

The workshops were held in August and September 2018. Around 200 people attended the community workshops that were hosted by individuals from Avondale Community Action, The Walking Samoans (Whau Area), Avondale Business Association, Avondale Collaboration Group and Avondale Union Parish.

Workshop discussions were based on six draft vision themes. These themes were identified by Motu Design through a review of what various community organisations had already recorded as being important to the people of Avondale. Attachment B includes information on the purpose of the workshops, the draft vision themes, and how they were sourced. Attachment C includes additional context maps and Unitary Plan information about the Avondale area.

The workshops provided an opportunity for a diverse range of people to discuss the draft vision themes within small groups. For each theme, people at the workshops were asked to share what would be important to them in the future of Avondale. Their hopes, dreams and aspirations were recorded on 'post it notes'. They also had the chance to discuss and share ideas about how these aspirations could be shared.

Some changes have been made to the vision themes to better reflect the comments received in the workshops before including them in this vision document.

A record for all the comments received in the workshops has been kept, and is available on request if groups would like to review them in more detail.



Avondale from the past

Avondale can be described as starting at Rangimatariki (Rosebank Domain) in the north. It is bordered by the Te Whau River to west and Motu Manawa marine reserve to the east. Avondale extends approximately to the ridgeline south-east of the railway line which forms the border between the catchments of Oakley Creek and the Te Whau River. Avondale is located on the edge of Auckland's main volcanic field with Owairaka (Mt Albert) visible to the east, New Lynn and the Waitakere ranges to the west.

Avondale has always been a place of movement and gathering. For seabirds it provides a crossing between the Waitemata and Manukau harbours. For Te Kawerau ā Maki, Ngāti Whatua and other Maori iwi (tribes), the Whau River was an important part of the Te Tōanga Waka portage route, used to travel between the harbours.

The Te Whau river is named after the Whau Tree that for Maori was an important resource for making floats for fishing nets. Along the river were seasonal villages and areas for gathering kai (food), including seafood, fish and birds.

When Auckland city was first established the area was known locally as 'the Whau' before being renamed Avondale in 1882. The town started as a staging post along the early trail route that headed west, and then Great North Road became the main road heading north of Auckland until the Harbour Bridge was built in 1959.

In 1889 Avondale Racecourse was established, serviced by the western Railway line that opened in 1880. The Rosebank peninsula became an important area of market gardens, orchards and plant nurseries. One of Avondale's early heroes is Hayward Wright who selected and propagated the "Hayward" cultivar of the Chinese gooseberry (today known as kiwifruit) that is still the main kiwifruit commercially grown in countries around the world.



*Avondale intersection of Great North Road with Rosebank Road, 1963
Sir George Grey Special Collections, Auckland Libraries, 580-7643*

Avondale today

Avondale's town centre, that is located on the historically significant Great North Road, is often "*seen as a drive through not a place to stop*" and since the 1960s the private motor car has been the primary mode of travel. Many people choose to shop outside of the area for a variety of reasons although the town centre retains a number of smaller independent retailers, businesses and services and is home to a number of community organisations.

The town centre and surrounding residential areas are not well connected to the railway station and pedestrian and cycle safety is a significant concern to residents because many people want to be less dependent on private car use. The future City Rail Link due to open in 2024 will also reduce travel times to the central Auckland and both the future Te Whau Pathway and Avondale to New Lynn Shared Path will also improve connections to both New Lynn and to the Te Whau River. Avondale is also highly dependent on the existing Avondale Racecourse for community sports fields and for the Avondale Sunday Market that is valued for its fresh produce, secondhand goods and as an important gathering place.

The Rosebank Peninsula area, that used to be market gardens before the north western motorway provided access to the area, is now home to a large area of industry as well as suburban housing. Most of the housing in the area is from the 1960s onwards. Avondale College is now one of Auckland's largest schools with many student coming from outside the local area to attend.

Avondale currently includes housing of varying type and quality and has a significant number of Housing New Zealand properties. Its population (2013 census) was roughly 10% Māori, 20% Pacific Island people, and a third each Asian and European people. As property prices have increased, the area's demographics have started to change with more professionals and new families moving into the area. The area is particularly diverse in terms of ethnicity/culture and socio-economic groups compared to other parts of Auckland.

The provision of affordable housing options, support for community health and well-being, and maintaining cultural diversity have all been raised as important issues for the future of Avondale. More recently, Avondale has become known for its creativity, local festivals, and great range of musicians and artists.



Avondale in the future?

Lots of change is anticipated in the future of Avondale. As the population of Auckland grows, so will the community of Avondale. More housing (including apartments and terraced houses), and taller buildings are likely to be built. New community spaces (including a new Library and Community Centre) are planned, along with improvements to the streets in the town centre, and more options for getting around including cycle paths. And over 50 years, all sorts of other changes could occur.

The vision for our future Avondale is described in the following section. It provides goals and aspirations for the type of place and community Avondale could be, and a direction for people to work towards. It includes a list of aims, design principles and actions under the following key themes:

- *Ngā Ara Whau – Safety and Accessibility*
- *Hauora - Health and Well-being*
- *Kotahitanga – Inclusiveness and Local Business Growth*
- *Taiao – Natural Environment*
- *Mahi Toi – Creativity and Diversity*
- *Mana – Character and Heritage*



Ideas for the future

"The area's natural ecology is highlighted and cared for like a precious gem"

"All our young people are cared for and provided for"

"make Great North Road great again"

"Food is where we first meet other cultures"

"prioritise social exchange rather than financial exchange"

"keep the market"

"pride in our horticultural heritage - Hayward Wright"

"A destination for a fun and safe outing with friends and family"

"marae-type building for important cultural events"

"don't be overly prescriptive ... give us a flexible space"

"Te Ao Maori culture is part of everyday life"

"more than the spider"

"Intergenerational Knowledge sharing"

"People have a place to hang"

"Community Gardens. Access to good food"

"Whau= Learning Environment"

"There's good support services so people don't fall through the cracks..."

"Sense of sharing the physical space with nature- trees, courtyards, public garden space"

"be famous here before elsewhere".

"Quirky things"

"Everyone feels welcome"

Avondale Community Workshops - 2018

IN OUR FUTURE AVONDALE...

Everyone feels welcome, we celebrate the diversity of our people and places, and groups within our community are well supported and connected.

Avondale is a friendly and interesting place to live, with well maintained parks, creative public spaces and good things going on.

We value our land and waterways, honour our past and work together to secure a bright and healthy future for us all.



Ngā Ara Whau-
Our Avondale is the gateway to the Whau, safe, friendly and easy for everyone to get around

Hauora-
Good health and wellbeing for ourselves, families and communities.

Kotahitanga -
Our town is for us all. Great for meeting people, recreation and shopping, with a growing range of jobs, activities and services.

Our future Avondale is well connected to the Te Whau river, town centre, railway station, key destinations, Rosebank peninsula and surrounding areas.

Avondale is a community of people that value their children, youth and elders.

Our future town centre is a safe, family-friendly destination that is a creative and fun place to live, work and visit.

Our streets and pathways are safe and pleasant places to walk or cycle, day or night.

Our future Avondale has a range of easily accessible community facilities, parks and public spaces that support a variety of different activities that connect us to each other and the natural environment, in support of physical, spiritual and mental wellbeing.

It has a range of quality buildings, public spaces, community services, facilities and businesses that support social connectedness and our local economy.

As the area intensifies, access to public transport is prioritised, so that even our less mobile people can get around with ease.

Our housing is of good quality, and supports the lifetime needs of people and our diverse communities.

The local businesses, community groups, schools, council and mana whenua work together to support development in the town centre to create places of civic generosity and community cohesion.

We trust our community to look out for each other, in particular the young and the old.

Affordable healthy food and fresh fruit and vegetables is locally accessible to us all.

There is always something to do, with options including shopping, food retailing, sports, entertainment, arts, learning, markets, bars and cafes.

Ngā Ara Whau refers to the many paths within the Whau area. This theme focuses safety and accessibility.

Hauora means fit, healthy, well and in good spirits. This theme is about Health and Wellbeing.

Kotahitanga means unity, cohesion, togetherness and collective action. This theme focuses on inclusiveness and local business growth in the Avondale town centre.



*Mā pango, mā whero
ka oti te mahi*

*With black and with red the
work is completed*

This whakatauki refers to different peoples or groups cooperating and combining efforts to achieve their goals.



Taiao -
Our land, waterways and natural environment are protected, restored and ecologically strengthened.

The Te Whau river is important to us, and so is Oakley Creek, the Motu Manawa Marine Reserve and the small streams and creeks that flow to these areas.

Mana whenua relationships to the natural environment are valued and we work together to ensure our parks and waterways are beautiful, protected and enhanced.

Both public and private development supports the cultural heritage and ecology of our place and there is a strong sense of being in and part of our natural environment, with lots of mature trees and planting.

In caring for our environment we aim to be a low carbon community.

Taiao means natural world and environment and is the focus of this theme.



Mahi Toi -
We are creative in what we do and how we do it.

In our future Avondale we continue to value and celebrate cultural diversity, creativity and independent expression. The arts are celebrated and accessible.

Our future Avondale has structures to better support learning, creative processes and the future impact of climate change.

Our creative scene encompasses a breadth of talent, interests, cultural practices and skills.

There are opportunities for children, youth and inter-generational learning as well as professionals, with spaces and places that encourage events, activities, and a mix of temporary and long term projects.

Mahi Toi means creative work. This theme focuses on creativity and diversity.



Mana -
We respect and celebrate the achievements of our people, places and histories.

In our future Avondale, we respect the past, hold on to the good and embrace the future.

We continue to take pride in the cultural diversity of our communities, and te ao Māori is part of our everyday life.

Māori and more recent histories are visible and celebrated in our place names, buildings, parks and public spaces.

Our stories are woven into the fabric of our place

Avondale is a community that builds up the mana of all its residents- their self-esteem, confidence, influence and status.

Mana means prestige, status and authority. This theme is about being proud of people and places in Avondale.

Ngā Ara Whau - Our Avondale is the gateway to the Whau, safe, friendly and easy to get around

Our future Avondale is well connected to the Te Whau River, town centre, railway station, key destinations, Rosebank peninsula and surrounding areas. Our streets and pathways are safe, friendly and pleasant places to walk or cycle, day and night.

As the area intensifies, access to public transport is prioritised, so that everyone can get around with ease.

We trust our community to look out for each other, in particular the young and the old.

Ngā Ara Whau refers to the many paths with the Whau area. This theme focuses safety and accessibility.

Vision Aims

Public transport is easy, safe, frequent and pleasant to use with good connections between bus and rail, and to key destinations including Avondale College and the Rosebank Peninsula.

Our train station is a safe and pleasant place to use during the day and at night with a unique local identity, cycle parking and accessible routes to and from surrounding areas.

Great North Road is safe for pedestrians, and an enjoyable place to walk through, to sit and spend time.

Our streets are child friendly, and our children can safely get to and from school without a car.

Cycle and pedestrian routes connect to key destinations, including the town centre, parks, bus stops, schools, and the river; and are safe, easy and pleasant to use.

Vehicle access through the area, and car parking to key destinations, is well managed in particular around the train station, schools, and major activities, including our markets.

Design principles and actions to help achieve these aims:

- Good lighting, for safety and attractiveness, along key pedestrian and cycle routes that connect to public transport, and the town centre.
- Fun wayfinding signage identifies pedestrian and cycle routes to access the river, town centre, and other local destinations.
- Hills are tricky for people with limited mobility, so universal access routes should be carefully planned and signed.
- Creation of new safe 'short cuts' so walking and cycling is faster than driving.
- Safe areas to cross main roads, in multiple locations that are convenient for pedestrians and cyclists.
- Resting spots on key pedestrian routes, and seating for older people, included some sheltered locations.
- Well maintained streets, street trees, planting and footpaths.
- Safe wet weather paving, to prevent slipping.
- More safe cycle routes, in a variety of forms, including connections to the river, between main cycle routes, and to key local destinations.
- Sheltered, lockable and monitored bike parking at the train station and town centre.
- Additional bus services from Rosebank residential and business areas, and to the town centre and train station.
- Community ambassadors, Maori wardens, Neighbourhood Support groups and police work together to build relationships, social connectedness and community wellbeing.
- Traffic is managed to better support pedestrian and cycle safety, general movement through the centre, and access to key destinations.
- Parking and pick up / drop off car parking options in and around the train station, markets and schools are well managed.
- Easy access to the Whau River, to support water sports and transport, such as boats and kayaks.

Hauora - Good health and wellbeing for ourselves, families and communities.

Avondale is a community of people that value their children, youth and elders.

Our future Avondale has a range of easily accessible community facilities, parks and public spaces that support a variety of different activities that connect us to each other and the natural environment, in support of physical, spiritual and mental wellbeing.

Our housing is of good quality, and supports the lifetime needs of our diverse communities.

Affordable healthy food and fresh fruit and vegetables is locally accessible to us all.

**Hauora means fit, healthy, well & in good spirits.
This theme is about Health and Wellbeing.**

Vision Aims

Our public spaces and places are safe and welcoming for socialising in a variety of ways, at both day and night and are designed to support a mix of ages.

Our people have access to activities and services that support their needs and interests including learning, arts and sports.

Quality physical and mental health services are accessible locally.

Our green spaces maximise opportunities to connect with the natural world, for contemplation and exercise, as well as play.

Markets, including our weekly Sunday market, continue to provide for community interaction and access to fresh produce.

Our community locally grows, buys and shares fresh fruit and vegetables, and has a wide range of food choices.

Our housing is of good quality and includes a mix of different types of units, and tenures that provide affordable options for life.

Design principles and actions to help achieve these outcomes:

- Provide a range of small and large gathering spaces with different seating options
- Places respond to the seasons and environment (sun, shade, rain, wind and views)
- Areas to sit and eat, for picnics or bought food
- Spaces and facilities for large community or family events including public BBQ's, grill pits, Umu/Hangi pits etc.
- Formal and informal play options for children
- A fabulous community centre and library
- Large scale residential developments include communal spaces and options for growing food in their design.
- Community groups and facilities (private and public) support a wide range of interests, including faith, music, arts, dance, culture, food, learning and exercise groups.
- Lots of exercise options, formal and informal including a swimming pool and community gym, good walkways, cycleways, public exercise equipment in a range of spaces including dog friendly areas.
- Destination play spaces, for children and youth, including water features, adventurous play, skate-parks and basketball.
- Safely lit walkway and open space options for after dark and early evening activity, that could include adjustable lighting options.
- Fruit trees in streets and public spaces and supported with bee hives.
- Community gardens and allotments are encouraged alongside healthy eating / local growing education programmes
- Local shops, services and events provide a culturally diverse range of healthy, affordable food options.
- Transport options enable youth, elderly and women to easily and safely access spaces, activities and facilities particularly outside of peak travel time

Kotahitanga - Our town is for us all. Great for meeting people, recreation and shopping, with a growing range of jobs, activities and services.

Our future town centre is a safe, family-friendly destination that is a creative and fun place to live, work and visit.

It has a range of quality buildings, public spaces, community services, facilities and businesses that support social connectedness and our local economy.

The local businesses, community groups, schools, council and mana whenua work together to support development in the town centre and create places of civic generosity and community cohesion.

There is always something to do, with options including shopping, food retailing, sports, entertainment, arts, learning, markets, bars and cafes.

Kotahitanga means unity, cohesion, togetherness and collective action. This theme focuses on inclusiveness and local business growth in the Avondale town centre.

Vision Aims

Avondale is a self-supporting township which caters for the day to day needs and preferences of its diverse communities, different ages, socio-economic and cultural groups.

Avondale is safe, clean, easy and enjoyable to walk to around with an active and creative street scene, and a range of large and small public spaces to explore.

It is also a multi-experience destination that attracts visitors to its markets including our weekly Sunday market, shops, sports facilities, playgrounds, arts, events and festivals with lots of options for entertainment, buying food and 'hanging out'.

Our histories and cultures of the area are reflected in the town centre, its buildings, streets and public spaces.

Buildings are well-designed and support a rich pedestrian experience and quality apartment living including a low carbon lifestyle.

Landscaping, mature trees, views and planting, support the creation of a 'green' town centre.

Design principles and actions to help achieve these outcomes:

- Public and private development, including community facilities and residential apartments, are designed to support local retail viability and business growth.
- A small supermarket, other food retailers, the Avondale Sunday market and alternative market options, such as permanent covered market or regular night market are all provided for.
- A range of small and large public spaces, and streets of different character support family friendly activity throughout the town centre, with options for events, markets, community and creative use including a 'central' town square.
- Generous footpaths are provided in addition to street trees and planting, seats, and amenities such as recycling bins.
- People are prioritised over cars at street crossings, with good connections to and from the train station and surrounding areas.
- The Whau River, Hollywood Theatre, Racecourse and Great North Road are recognised as important heritage features in the town centre.
- Quality public toilets and additional facilities such as free wi-fi and communal work spaces support the use of the centre.
- Parking, public transport and pedestrian routes are located and designed to support easy access to the town centre.
- Views to the west of the Waitakere Ranges and sunsets are preserved from key locations.
- Planting and landscape features support connections to the natural environment of the wider Avondale area.
- Heritage and character buildings are protected and new development is designed to complement them.
- Mana whenua and heritage values are acknowledged and reflected in the centre, its community facilities, landscaping and public spaces.
- Creative art and lighting also support local character and identity.

Taiao - Our land, waterways and natural environment are protected, restored and ecologically strengthened.

The Te Whau river is important to us, and so is Oakley Creek, the Motu Manawa Marine Reserve and the small streams and creeks that flow to these areas.

Mana whenua relationships to the natural environment are valued and we work together to ensure our parks and waterways are beautiful, protected and enhanced.

Both public and private development supports the cultural heritage and ecology of our place and there is a strong sense of being in and part of our natural environment, with lots of mature trees and planting.

In caring for our environment we aim to be a low carbon community.

Taiao means natural world and environment and is the focus of this theme.

Vision Aims

We can swim in the waterways, with clean healthy water supporting native habitats and recreational activity.

Our parks and streams are connected with pathways and native planting form ecological linkages. Throughout the area native bird song can be heard.

Our green spaces are also protected and enhanced as places for recreation, interaction and learning to support the well-being of our communities.

Littering is socially unacceptable. Recycling and reuse is easy, and education programmes plus waste management services ensure that Avondale is always clean.

Future changes due to climate change including a rise in sea level, and flood risks are understood and addressed in future planning.

The Te Whau River and Te Whau Pathway is accessible from Avondale, with new activities along the river's edge. The Motu Manawa greenway is completed, and links to Oakley Creek are strengthened.

Buildings and public spaces demonstrate environmental responsibility, leadership and innovation e.g. solar power, water sensitive design, adaptive re-use, electric vehicle charging, underground utilities.

Design principles and actions to help achieve these outcomes include:

- Native planting along streams and waterways and areas of bush are protected, with new areas established to ensure bio-diversity is maximised and connected to the North-West Wildlife link.
- Existing and planned walkways along streams and coastal edges are connected with new links where required and landscaped to support biodiversity and wildlife.
- Creative and well thought out planting includes a range of approaches responding to use and location, including flowers and fruit trees.
- Mature trees are protected.
- Views to the Te Whau River are maintained, and activities that engage with the river are supported e.g. waka ama, swimming, kayaking, fishing, picnics.
- Businesses that border parks and waterways ensure they are ecologically responsible and support the safety of walkways.
- The Whau tree is celebrated as an ecological signature for Avondale.
- Waste management processes ensure ease of re-use, recycling, composting and rubbish disposal, and prevent dumping and littering in public areas.
- Innovative stormwater management ensures water quality is protected and improved in streams, rivers and the marine reserve.
- Pest management processes are developed, including management of weeds, rodents, possums etc.
- Education in schools and other learning opportunities, promote environmental initiatives and use local examples.
- New and existing housing is built or retrofitted to a high standard of environmental design.
- Large developments include communal areas.
- Community gardens support local food production and community well-being and celebrate the horticulture heritages of the area.

Mahi Toi - We are creative in what we do and how we do it.

In our future Avondale we continue to value and celebrate cultural diversity, creativity and independent expression. The arts are celebrated and accessible.

Our future Avondale has the structures to better support learning, creative processes and the future impact of climate change.

Our creative scene encompasses a breadth of talent, interests, cultural practices and skills. There are learning opportunities for children, youth, adults and professionals, with spaces and places that encourage events, activities, and a mix of temporary and long term projects.

Mahi Toi means creative work.

This theme focuses on creativity and diversity.

Vision Aims

Our creativity is regularly seen, heard and experienced in many ways.

Our parks, public buildings, places and streets welcome creative expression in their use, as well as in their design.

Our culturally diverse range of skills are easily able to be shared and new ones learnt with a range of affordable spaces to support community use e.g. spaces for dance, music, wood working, robots and technology, traditional crafts, pottery, weaving, artist's studios, food, print making, glass blowing...

There are opportunities through our weekly Sunday market and other markets, galleries, shops and community events to support local artists and small businesses.

There are ongoing opportunities for community involvement, participation and leadership in events, education, town planning and public space design.

Design principles and actions to help achieve these outcomes:

- The design of public buildings and spaces include opportunities for community collaboration, and expression of local heritage and cultures.
- Our footpaths are wide enough for buskers.
- Our public spaces provide power points, water supply and other services to support events.
- Our murals are valued and tell stories of the area.
- The design and retrofitting of buildings integrates environmental responsiveness into creative design solutions.
- Artists are invited to contribute to the design of public spaces, and visually prominent buildings.
- Artworks in parks and public spaces are diverse including grass roots and big thought-provoking art.
- A diverse range of free or affordable community run events are supported, that include music, performance and a range of interests.
- A range of affordable and accessible spaces support community involvement in creative activities, including rehearsal areas and workshops.
- Galleries and performance spaces are integrated into the design of new public buildings.
- A range of local icons are celebrated in temporary and permanent projects.
- Mana whenua values and heritage are creatively expressed.
- Art is encouraged to be part of buildings.
- Local art trails are encouraged, and have the potential to be a tourism feature in addition to heritage trails.
- A range of markets including our weekly Sunday market provide opportunities for artists, craft, music, performance and small businesses.

Mana – We respect and celebrate the achievements of our people, places and histories.

In our future Avondale, we respect the past, hold on to the good and embrace the future. We continue to take pride in the cultural diversity of our communities, and te ao Māori is part of our everyday life.

Māori and more recent histories are visible and celebrated in our place names, buildings, parks and public spaces. Our stories are woven into the fabric of our place.

Avondale is a community that builds up the mana of all its residents- their self-esteem, confidence, influence and status.

**Mana means prestige, status and authority.
This theme is about being proud of people and places in Avondale.**

Vision Outcomes

Mana whenua relationships with land, water and natural resources are valued.

The Maori histories of the area, including the Rangimatariki (Rosebank Park Domain) and the waka portage route, are celebrated and acknowledged.

Stories, events, people and places from Avondale’s past are known and shared throughout the area in a variety of ways, including our horticulture, racecourse and sporting heritage.

Valued buildings are retained and restored, including the Hollywood theatre.

In the town centre, our heritage, character and cultural diversity is expressed through the design of buildings, streets and public spaces.

We have events, activities and spaces to share and celebrate our cultural heritage.

People of Avondale are connected and share a sense of belonging.

Design principles and actions to help achieve these outcomes:

- Our horticulture heritage and knowledge is expressed in our planting and landscape design in public and private places.
- Landscape design is appropriate to the location, and reflects Maori heritage and cultural values in environmentally and culturally sensitive areas.
- The natural heritage of our rivers, waterways and coastal edge is preserved and restored.
- Old mature trees are protected.
- Art that expresses the diversity of our histories and communities is supported, including murals and graffiti walls.
- Activities and events showcase and celebrate the achievements of our people, past and present.
- Heritage trails, artwork, signage and plaques record sites of historical significance.
- Maori place names are known and used, and te reo signage is supported.
- A range of old buildings, of good character are protected.
- New buildings, in particular within the town centre, are designed to respond to the character of older buildings and Avondale's past.
- A diverse range of community organisations including schools, sports clubs, cultural and religious groups are respected, connected and supported.
- Communication and promotion of local people, community organisations, businesses and events are supported, including local notice boards, newsletters, and social media.
- A local museum and gallery spaces are encouraged.
- Local history is supported by education programmes and able to be experienced by children and youth, potentially through schools.



Images Top & Centre: Vision feedback displays at Avondale Library, Sirens and Sounds Event & Avondale Xmas Market. Lower Image: Handover of Our Future Avondale Document at 'All Goods' Whau Arts Space.

A BIG THANKS TO...

Everyone who has helped make this project possible.

Ka mihinui kia koutou.



Attachment A - Summary of Facebook Comments

459 social media posts from the 'I love Avondale' and 'Avondale Community Action' Facebook pages were collated and analysed. These were collected from 27 July to 2 September and relate to both media coverage on Avondale, and specific questions posted by the facebook page hosts seeking comments.

The most talked about topics related to the Avondale town centre (Kotahitanga), Mana (Pride) and Ngā Ara Whau. However, these also reflect the angle of the host's posts and the time period that they were made in that included media attention referring to Avondale as a third world suburb, the announcement regarding the uncertain future of the Racecourse and recent Housing New Zealand projects in the neighbourhood. A spreadsheet with all the raw data, methodology and a table showing some figures is available on request.

Below is a summary of the main comments:

- The Kotahitanga theme was the most prominent, with 155 comments. Conversations were mainly around the town centre (eg better shops, shopping in general) and recreation spaces (eg retaining the racecourse sports fields).
- Mana was the second most common, with 126 comments. There was a lot of pride expressed in Avondale as it is, especially with respect to its cultural diversity. The appearance of the town centre and retaining the Avondale Markets were other prominent topics within the Mana theme.
- There were 103 comments relating to Nga Ara Whau. This included conversations about traffic – especially regarding planned housing intensification – and other modes of transport, especially active modes. There were also comments about feeling unsafe in the town centre or in parks.
- The Taiao theme was especially prominent on ACA's page. Many people supported the idea of a new indoor produce market with the caveat that it was plastic-free. Other ideas were about 'green' infrastructure – harnessing solar and wind, capturing rainfall etc.
- Mahi Toi (13 comments) and Mauri (5) topics were discussed far less frequently than the others. I'd suggest the main reason for this was that the angle of the posts analysed didn't encourage these responses (aside from a single ACA post specifically about the creative arts here).
- The Mahi Toi comments that did exist often acknowledged the number of creatives here and/or celebrated the street art here, including the historical murals. There were many comments about retaining green spaces for recreational use, but without a solid link to health and wellbeing otherwise there would have been more Mauri-related comments.

Facebook Community quotes

Sourced from the 'I Love Avondale' and 'Avondale Community Action' Facebook pages

"Walk through the town centre and exclaim how attractive all the shops are".

"Lights on at night and CCTV at eastdale reserve so we have a well lit safe place to exercise after work in winter. And more use of the council installed outdoor gym! And improve the pathway - very slippery".

"We're lucky to have Whau the People, Whau Arts Festival, Whau Pacific Festival, The Creative Souls Project, Arts Whau, Avondale Art Park etc. Wouldn't say no to more! Bring on all the colour and expression - public murals and sculpture, light installations, pop-up performances on main street - keeps Avondale different and interesting."

"I like the murals with a nod to the historic nature of the area. Be nice to continue to celebrate the old and new".

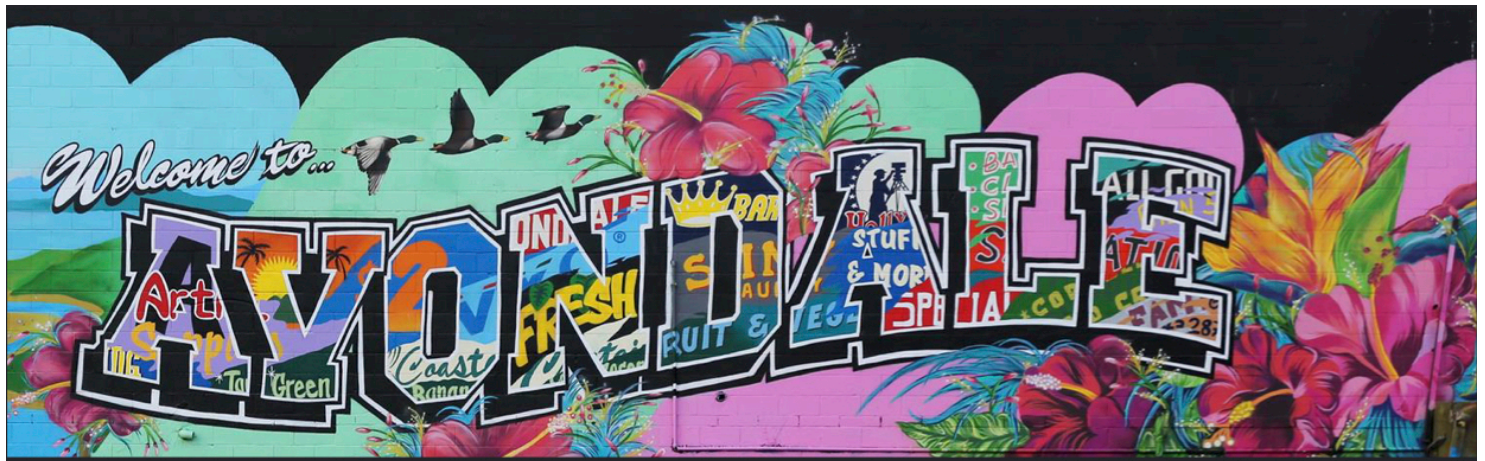
"Maximise sun and shade, create places that make people feel good and want to stay a while, relax, socialise. Incredible opportunity ahead with Racecourse to retain the lungs of Avondale and open up the green for more people to enjoy".

"We have such great bones in the town centre - there's hardly anywhere else in Auckland that has shops, places for gatherings and events (the community centre, the square by spider, the school), places for sport & rec (the racecourse, courts and cycle park) all within the same few blocks. - maybe Māngere Bridge is the only similar place with such a mix. We just need a bigger range of shops and some other places to eat / drink and it would be A++. I agree it's been getting better over the last few years too!"

"maybe our main street is a bit crap - yet it is definitely improving with the arrival of Cain, Woodworks, Subway, the posh new dentist building(ugh), the new laundromats etc, and what about our community? Our vibe? Our whanau we have built? Our free book shop in Victor Street? Our parks? Our lovely whau? Our schools and kindergarten where several generations of families have attended? Our fantastic diverse multi-cultural residents who we all learn from? The community support to look after and feed our less fortunate? A place is more than just a main street.....and what about the fact that you can walk into most shops and be greeted like an old friend by the shop owners and that those shop owners appreciate our custom as much as we appreciate their friendly smile?"

"I've lived in Avondale for 15 years. I've been to Avondale primary, intermediate and college. I just love the location and the friendly people we have here".

"Unity in a community is very important...a sense of unity is still vibrant in the people of I Love Avondale"



Help shape **our** future AVONDALE

Purpose of the Workshops

- So that different people from Avondale can get together, to talk about our values and ideas for the future of Avondale
- So that the many voices of Avondale can create a community-led vision document
- To help designers and decision-makers know what is important to us, and to help to shape the character of future development in Avondale

What's different?

- The proposed Vision document builds on feedback that has already been done before eg. Stand Up event, Local Board plan, ACA survey, I Love Avondale, I am Auckland, etc.
- The workshops aim to develop and add to this information in a way that will identify key values of Avondale to help inform and influence real change
- Aims to seek input from a broader range of people from our Avondale communities

How is the vision being made...

- 3x Community Workshops
- Comments from Facebook and Library Display
- Discussions based on vision themes sourced from community documents
- After the workshops a draft vision document will be made by Motu Design and shared for you to comment on before it is finalised

The Avondale Community Vision document:

- Will be given back to you, and the community groups who have taken part;
- Be shared with the Whau Local Board, Panuku Development Ltd, Auckland Council, HNZ etc
- Will help you with future projects and plans, including input into Council projects that you will be asked about when work starts on these.

Avondale is changing

- More housing
- Taller buildings
- Upgraded town centre
- New community spaces
- New ways to get around

Join us to create a community-led vision to reflect the voices of Avondale and help shape these changes

Please register for one of the following workshops by Eventbrite, Email or Phone.

- Wednesday 29 August 7pm - 9.15pm Avondale Primary School Hall
- Friday 31 August 9.30am - 12pm Avondale Community Centre
- Saturday 1 September 1pm - 3.30pm Avondale Primary School Hall

Doors open half an hour before workshop for networking. Refreshments will be provided.

Email avondale@motudesign.co.nz
Phone Motu Design 815 3502

Enabled by Whau Local Board and MOTU design

At the workshops we will talk about:

A Community-led Vision

What could **your** future Avondale look like?

Design Principles

What do we need to make this happen?



Enabled by:



WHAT WE'VE HEARD DRAFT VISION THEMES

A lot of feedback has been provided by people over the years, on what is important to the community of Avondale. This has informed the values and aspirations listed below, that we will discuss at the community workshops, as part of creating a shared community vision for Avondale. We will also discuss ideas about how to achieve these aspirations and to help identify some key principles to guide designers and decision makers about what the community would like Avondale to be like in the future.

Mana - Pride in our people, places and histories¹

(Values: Heritage, Character and Landscape)

Mahi Toi – We are creative in what we do and how we do it²

(Values: Creativity)

Kotahitanga – Our town centre is for us all. Great for meeting people, recreation and shopping, with a growing range of jobs, activities and services³

(Values: Diversity, Inclusiveness and Local business growth)

Taiao – Our land, waterways and natural environment is protected, restored and ecologically strengthened⁴

(Values: Natural Environment)

Mauri - Ensuring good health and wellbeing for ourselves, family and communities within the places that we live.⁵

(Values: Health and Wellbeing)

Ngā Ara Whau - Our Avondale is the gateway to the Whau, safe and easy to get around.⁶

(Values: Safety and Accessibility)

¹ "Showing love for Avondale people, places, events and history" I Love Avondale Facebook page (July 2018) <https://www.facebook.com/pg/ILoveAvondale/about/> (July 2018). Also reflected in: Mana Whenua Aspirations, Te Whau Pathway Volume (2 June 2017); Avondale Business Association Strategic Plan 2017 – 2020; and the Avondale - Waterview Historical Society Inc.

Mana can be translated as *pride or authority*

² As reflected in: Whau the People Charitable Trust (2018) and the 'Stand Up' Avondale Event Feedback (2018).

Mahi Toi can be translated as *art, craft or creative expression*

³ "A thriving and local town centre. A town that is an economically and socially responsive- a good place to shop and use services, socialise and integrate with people". The Vision, Avondale Business Association Strategic Plan 2017 – 2020. (May 2016)

Kotahitanga can be translated as *unity, cohesion, togetherness and collective action*.

⁴ "Taiao – Our natural environment is protected, restored and enhanced", Mana Whenua Aspirations, Urban and Landscape Design Framework, Te Whau Pathway Volume (2 June 2017)

Taiao can be translated as *natural world, environment authority*

⁵ "Supporting good health and wellbeing for self and family" "The participants' hopes, dreams and priorities were mostly centred around family connectedness, health and wellbeing and achieving financial security." Avondale Random Household Survey Report, Avondale Community Action (2014)

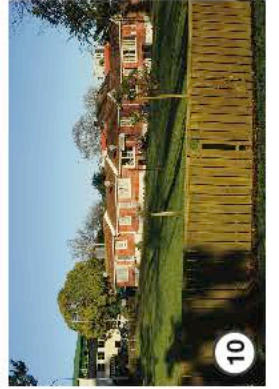
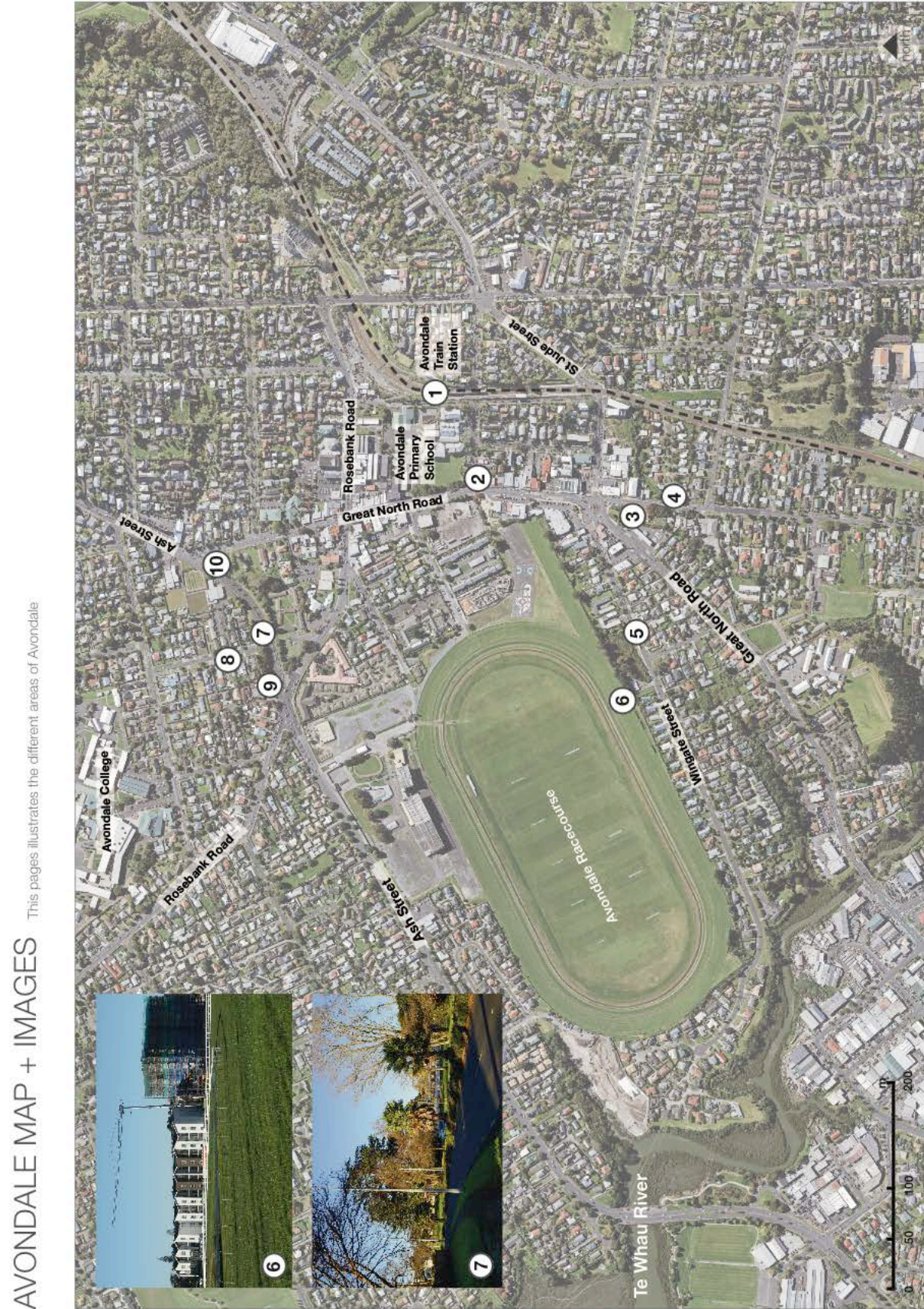
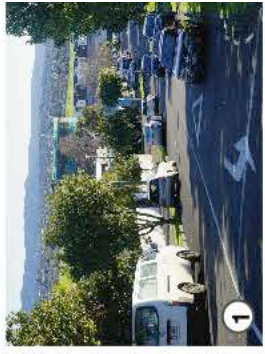
Mauri can be translated as *life force, the essential quality and vitality of being or entity*.

⁶ Adapted from Central West Area Community Needs Assessment and Facilities Investigation, Point Research (July 2016). Also reflected the objectives of the Te Whau Pathway (2 June 2017)

Ngā Ara Whau can be translated as *the pathways of the Whau area / river catchment*.

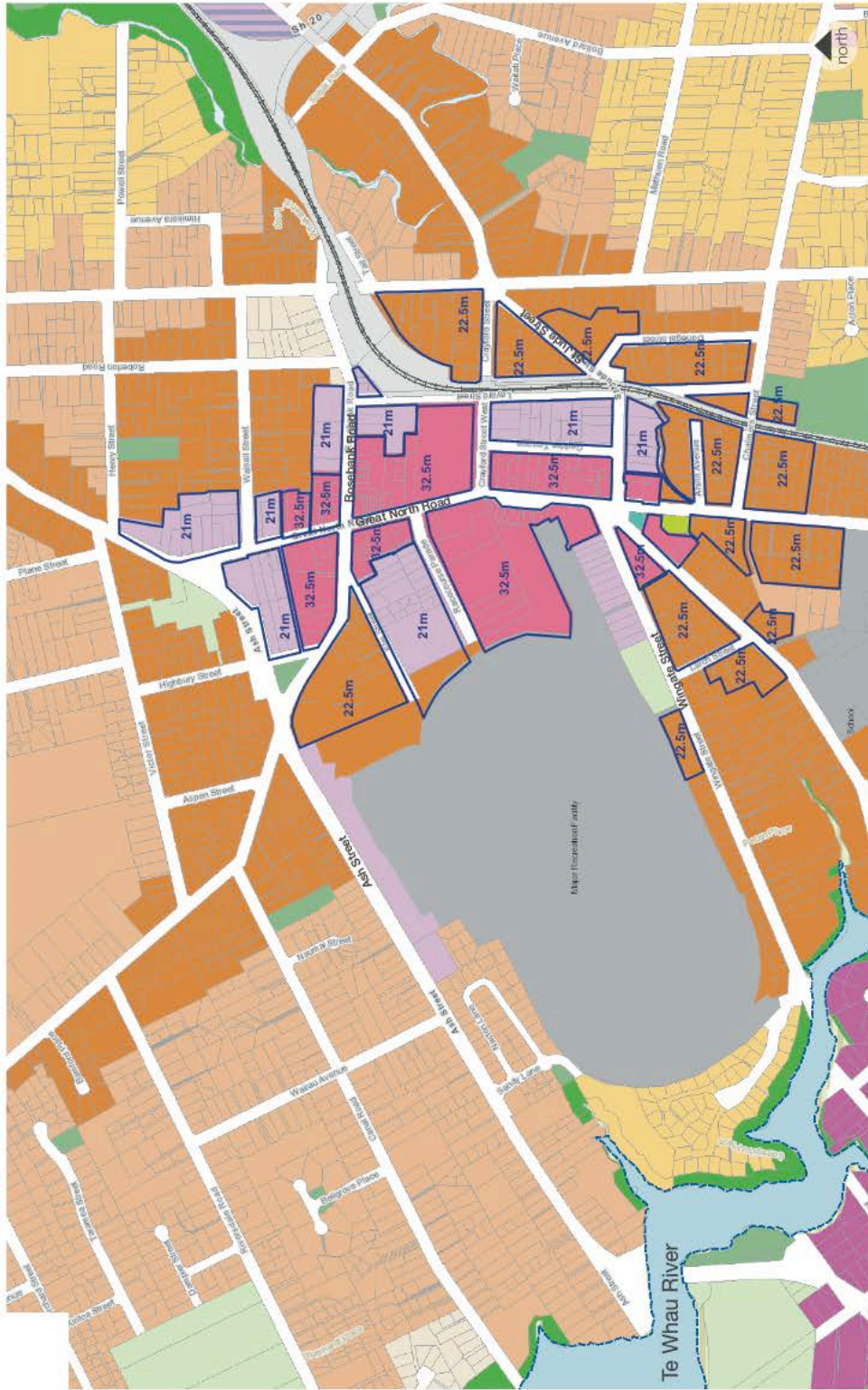
Additional References: I Am Auckland - the Children and Young People's Strategic Action Plan 2013.

Maori translations taken from Te Aranga Design Principles, Auckland Design Manual, Auckland Council and the Maori Dictionary.co.nz



AUCKLAND UNITARY PLAN

This map shows the new types of buildings and potential heights of buildings that can be built in Avondale.



- Residential - Single House Zone - 8m (1- 2 storeys)
- Residential - Mixed Housing Suburban Zone - 8m (1- 2 storeys)
- Residential - Mixed Housing Urban Zone - 11m (2-3 storeys)
- Residential - Terrace Housing and Apartment Buildings Zone - 16m (4 storeys) and up to 22.5m (7 storeys) in some areas
- Open Space - Conservation Zone
- Open Space - Informal Recreation Zone
- Open Space - Sport and Active Recreation Zone
- Open Space - Civic Spaces Zone
- Open Space - Community Zone
- Business - Local Centre Zone - up to 32.5m (10 storeys) in most areas
- Business - Neighbourhood Centre Zone
- Business - Mixed Use Zone - up to 18m (6 storeys) and 22.5m (7-8 storeys) in some parts
- Business - General Business Zone
- Business - Business Park Zone
- Business - Heavy Industry Zone
- Business - Light Industry Zone

* building storeys are indicative only.



Mix of 3 and 6 storey apartment buildings being built at the Racecourse Parade site by the Ockham developers.



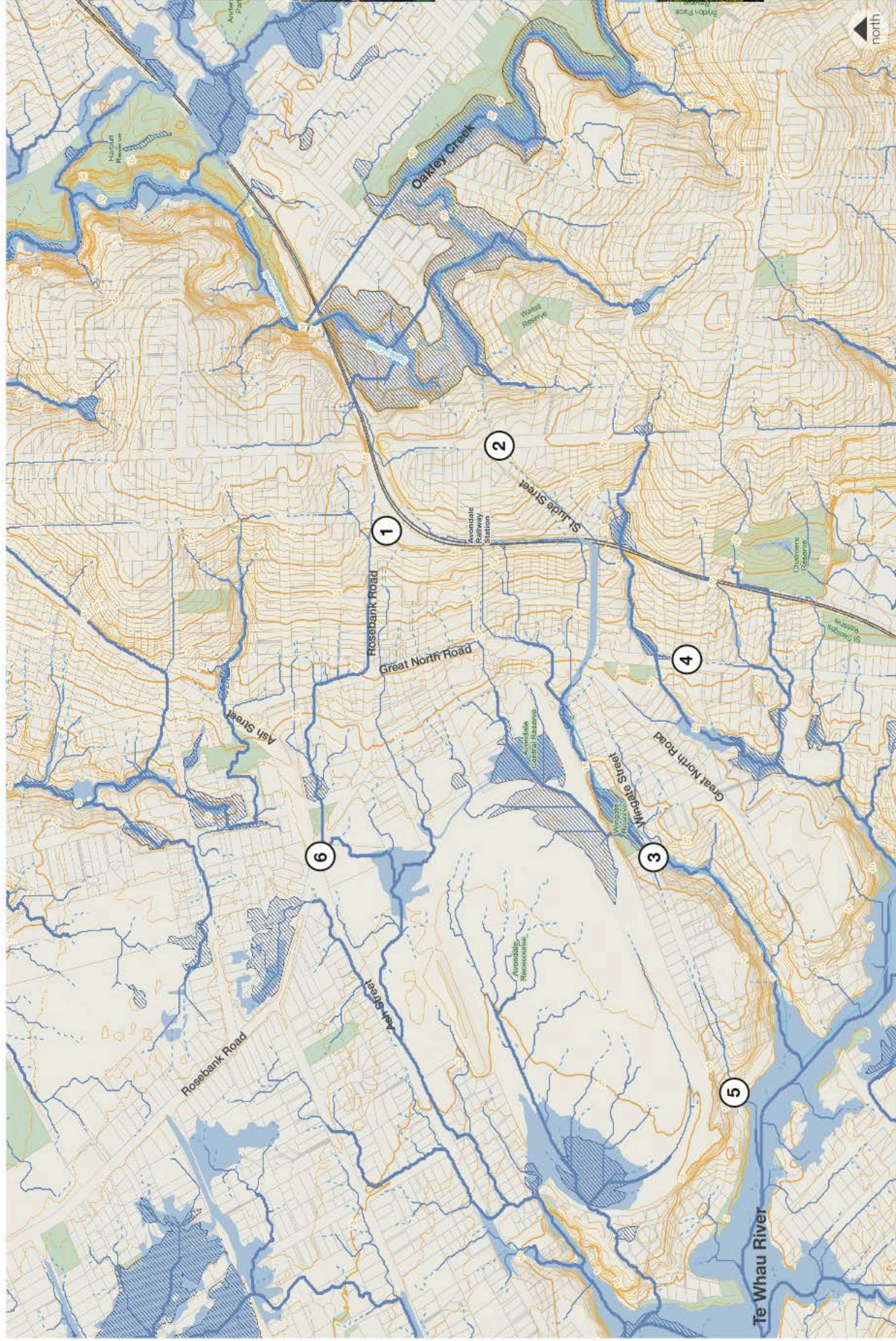
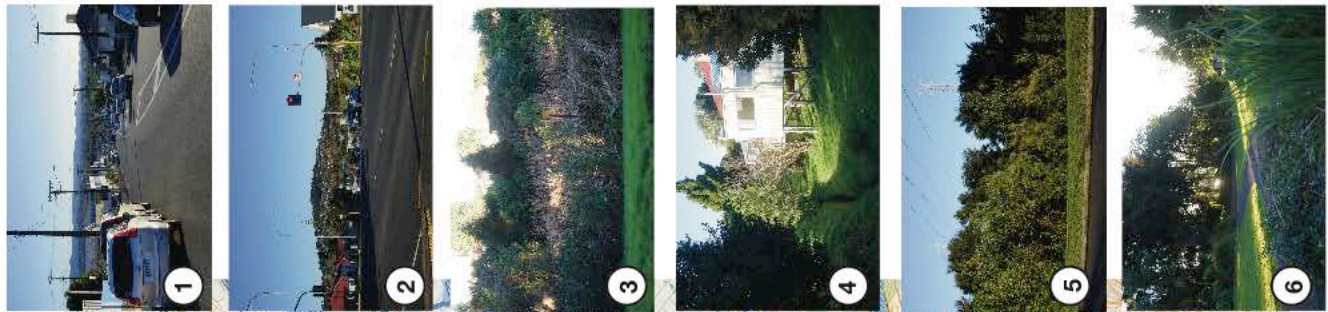
3-5 storey apartment units proposed for St Georges Road.



3 storey terrace housing planned for Holly Street.

WATER AND LANDFORMS

This page shows where the water flows through Avondale including streams, overland flow paths and flood prone areas.



River Names

- River Names
- Overland Flow Paths - 3ha and above
- Overland Flow Paths - 3ha and above
- Overland Flow Paths - 4000m² to 3ha
- Overland Flow Paths - 2000m² to 4000m²
- Overland Flow Paths - 2000m² to 4000m²

Flood From Areas

- Flood From Areas
- Flood Sensitive Area
- Flood Sensitive Area
- Flood Plains
- Stormwater Catchments

Contours

- Contours
- Contours
- Contours
- Rail Stations (8,000)
- Rail Stations (8,000)
- Railway (2,500)
- Railway (2,500)

Parcels

- Parcels
- Lakes
- Base Region (CRS)
- Land Outside
- Water
- Region Cache Public Open Space Extent
- Region Cache Public Open Space Extent

MOTU design

References

Images used in this document are sourced from:

<https://www.facebook.com/pg/ILoveAvondale>

<https://whauipeople.com/>

<http://www.avondalecommunityaction.org.nz/>

Max White (Avondale Photographer- Whau River)

<http://ourauckland.aucklandcouncil.govt.nz/articles/news/2016/12/new-basketball-court-opens-in-avondale/>

Lea Schlatter (Avondale Photographer- Puligi and Custard)

A number of documents and websites were researched to form the vision and draft themes. These include:

Avondale Business Association Strategic Plan 2017 – 2020 (May 2016)

<https://avondale.net.nz/about-us/>

[Landscape and Urban Design Framework Volume 1: Context + Analysis](#)

[Landscape and Urban Design Framework Volume 2: Overarching Principles + Design Concepts](#)

<http://tewhaupathway.org.nz/resources/>

Avondale Random Household Survey Report, Avondale Community Action (2014)

<http://www.avondalecommunityaction.org.nz/research/random-household-survey-2014/>

Stand Up Avondale Community Feedback, Avondale Collaboration Group, 2018

Whau Local Board Reports:

Whau Local Board Plan(2017); Whau Neighbourhood Greenways Plan; Whau Open Space Network Plan (March 2017); Whau Becoming a Low Carbon Community- An Action Plan (2017)

<https://www.aucklandcouncil.govt.nz/about-auckland-council/how-auckland-council-works/local-boards/all-local-boards/whau-local-board/Pages/whau-plans-agreements-reports.aspx>

Central West Area Community Needs Assessment and Facilities Investigation, Point Research (July 2016).

I Am Auckland - the Children and Young People's Strategic Action Plan 2013.

<https://www.aucklandcouncil.govt.nz/plans-projects-policies-reports-bylaws/our-plans-strategies/topic-based-plans-strategies/community-social-development-plans/Pages/children-young-peoples-strategic-action-plan.aspx>

Maori translations taken from Te Aranga Design Principles, Auckland Design Manual, Auckland Council and the Maori Dictionary.co.nz

We can be proud of the old as well as new buildings

spaces that encourage multi-cultural gatherings + meetings

Acknowledging present people

maintain / don't lose Avondale's history. Keep our historic places knowledge

Asian + other groups also really identifiable + included.

Tangata te whaia recognition + Diversity recognition

Nature multi-cultural character - art and music venues

our heritage is expressed in the architecture of new buildings

INCORPORATE PRIDE / HISTORY INTO DEVELOPMENT
- MAKE KNOWLEDGE ACCESSIBLE
- GATHERINGS TO SHARE KNOWLEDGE
STAFFED

Shanny Knowledge

COMMUNITY GARDENS (NATIVE) AS SPACE FOR COMMUNICATING

Our Future Avondale was:
Facilitated by Motu Design
Enabled by the Whau Local Board &
Supported by Avondale Community Action

Cover Images

Thanks to: Dayne Smith (I Love Avondale), Reyshiel Andres, Brian Marsom, Whau the People & Michelle Ardern.

